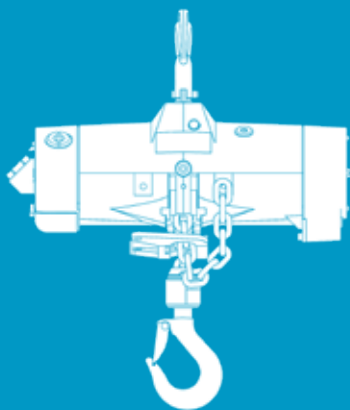


Air Hoists and Trolleys



Atlas Copco

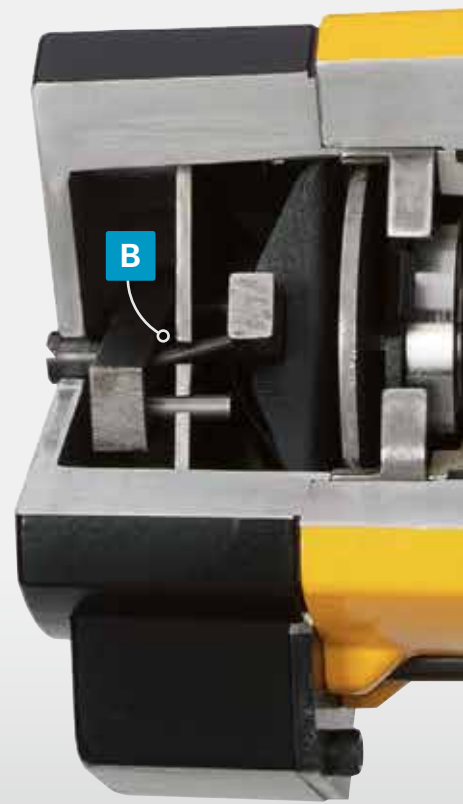


AIR HOISTS AND TROLLEYS

ATEX Certified with stepless control for a smoother safer lift

For fast, precise and reliable lifting of heavy loads, Atlas Copco air hoists and trolleys are the industry benchmark.

- Robust
- Reliable
- Lightweight
- Stepless control



A Hooks

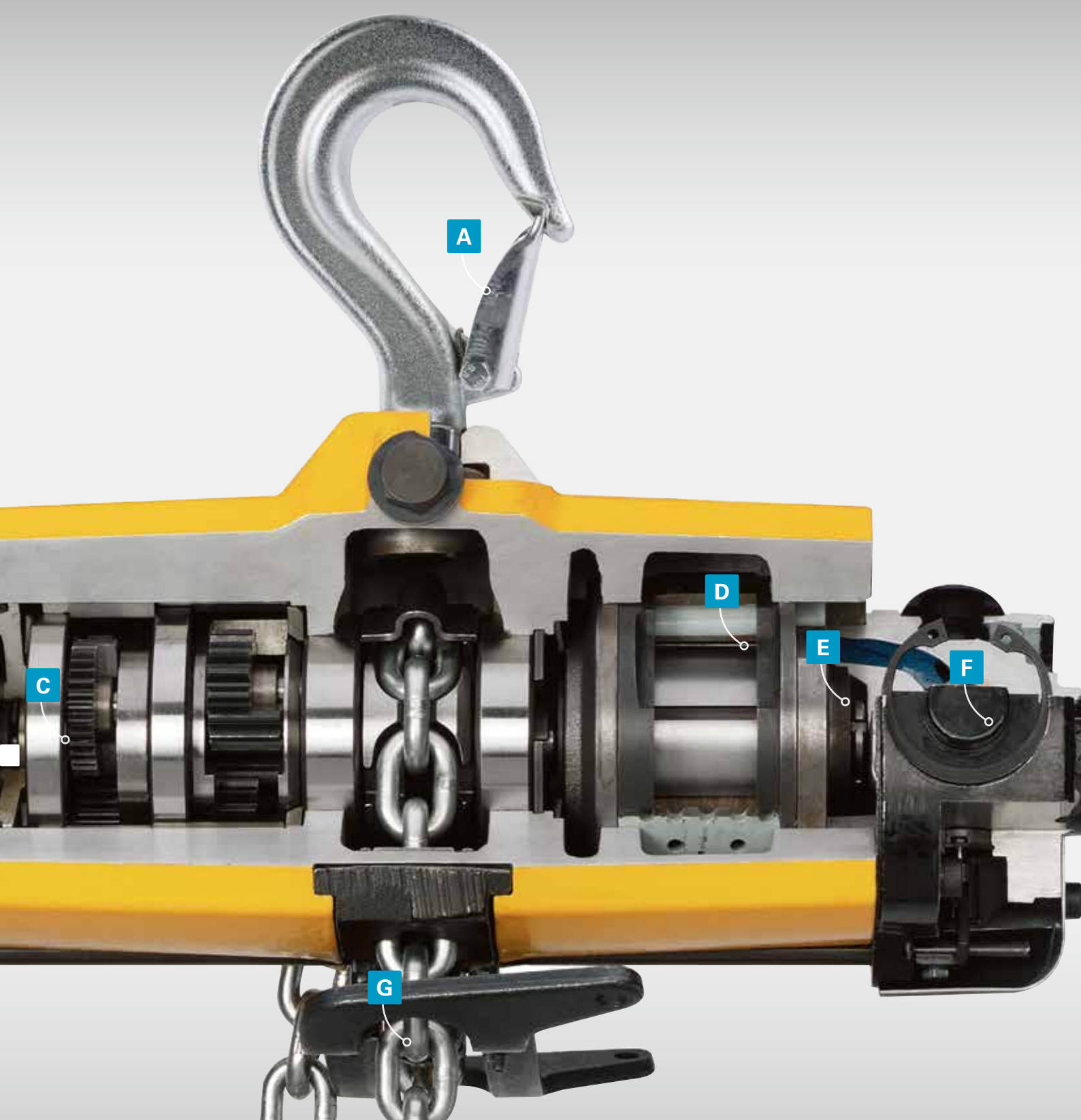
- Made of special high grade steels, zinc-plated and blue-chromated. Provides full 360° rotation.

B Brake

- Eliminate load sink and ensure smooth take-up with the enclosed disc brake.

C Gears

- Planetary gear system dimensioned for continuous operation at full load.
- All meshing components are hardened.
- All rotating components are supported by ball or needle bearings.



D Lubrication free

- The hoists can be run completely dry and leave no lubrication in the exhaust air.
- Lubrication can be used and will improve vane lifetime.

E Vane motor

- The LLA hoist motor's smooth starting and low - speed characteristics are optimised for ease of control.

F Main valve

- Precision control valve offers stepless speed control, smooth start-up and outstanding inching characteristics.

G Load chain

- Zinc-plated, blue-chromated and designed for optimal safety and long service life.
- The load chain is made of surface hardened, high grade special steel.

Stainless steel chain

- Available for LLA 250/500.

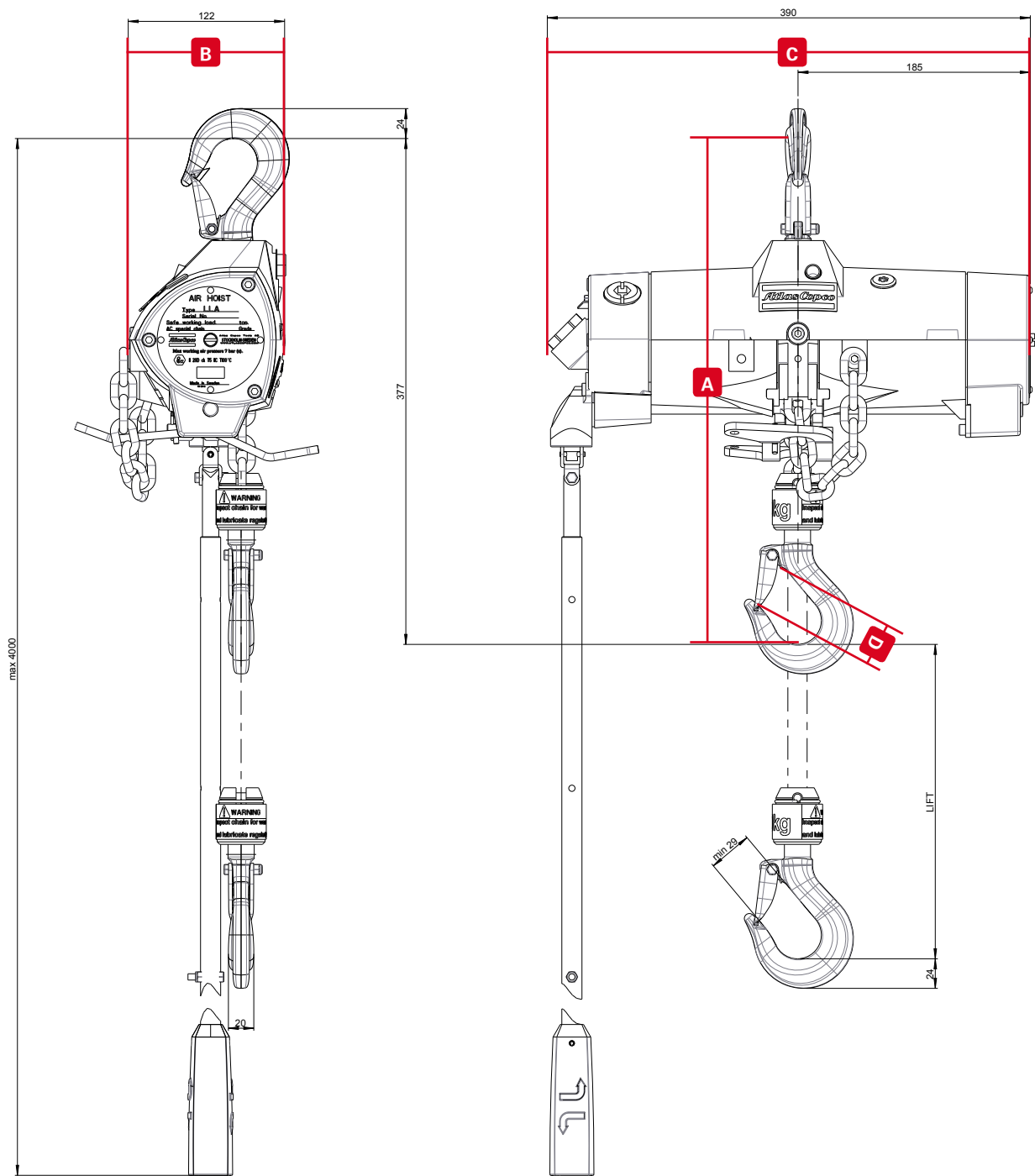
Technical data LLA250/LLA500

Model	Lifting capacity kg	Lifting speed at full load		Chain drops qty	Weight ex. chain		Chain weight		Required chain-length metre	Sound pressure	Air consumption		Hose dia		Hose fitting thread BSP	Ordering No.
		m/ min	ft/ min		kg	lb	kg /m	lb /ft			l/s	cfm	mm	in		
Lubrication free																
LLA 250L EX	250	18.6	61.0	1	12.7	28.0	0.9	0.6	Lifting height + 0.5	84	37	78	12.5	1/2	1/2	8451 1550 17
LLA 500L EX	500	12.6	41.3	1	12.7	28.0	0.9	0.6	Lifting height + 0.5	83	38	81	12.5	1/2	1/2	8451 1550 25

Performance figures are at 6 bar working pressure.
NOTE: Load chain and control chain must be ordered separately.

Dimensions LLA250/500

LLA 250/500	A		B		C		D	
Capacity, Kg	mm	in	mm	in	mm	in	mm	in
250	377	14.8	122	4.8	390	15.4	29	1.1
500	377	14.8	122	4.8	390	15.4	29	1.1



Technical data LLA980/LLA1000

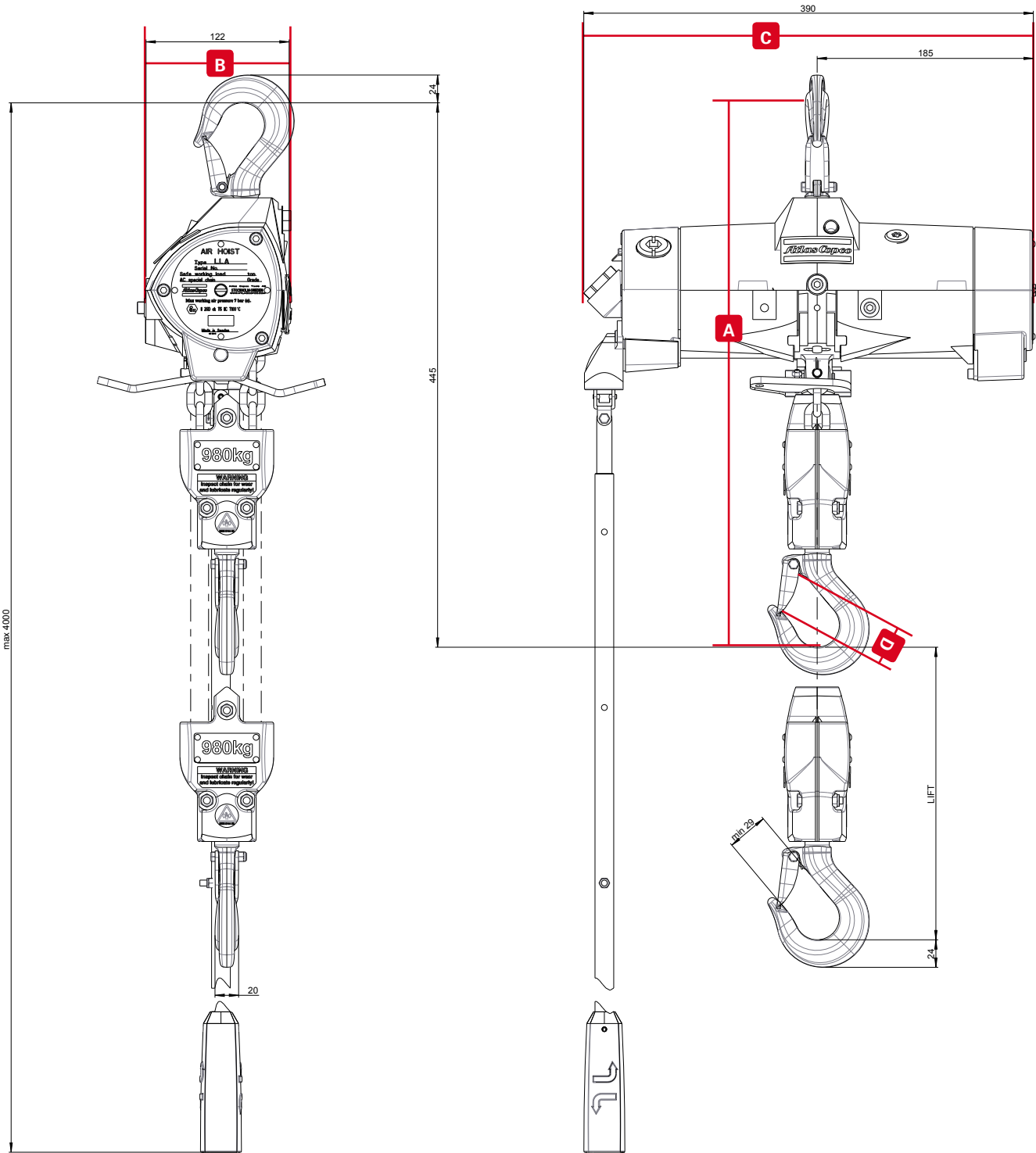
Model	Lifting capacity kg	Lifting speed at full load		Chain drops qty	Weight ex. chain		Chain weight		Required chain-length metre	Sound pressure	Air consumption		Hose dia		Hose fitting thread BSP	Ordering No.
		m/ min	ft/ min		kg	lb	kg /m	lb /ft			l/s	cfm	mm	in		
		Lubrication free														
LLA 980L EX¹	980	6.3	20.7	2	14.5	32.0	0.9	0.6	2 x Lifting height + 0.5	83	38	81	12.5	1/2	1/2	8451 1560 15
LLA 1000L U EX¹	1000	6.3	20.7	2	14.5	32.0	0.9	0.6	2 x Lifting height + 0.5	83	38	81	12.5	1/2	1/2	8451 1550 66
LLA 1000L EX	1000	6.3	20.7	2	15.0	33.0	0.9	0.6	2 x Lifting height + 0.5	83	38	81	12.5	1/2	1/2	8451 1550 32

Performance figures are at 6 bar working pressure.
¹) Without overload protection device, not to be used within the European community.

NOTE: Load chain and control chain must be ordered separately.

Dimensions LLA980/1000

LLA 980/1000 U EX	A		B		C		D	
Capacity, Kg	mm	in	mm	in	mm	in	mm	in
1000	495	19.4	122	4.8	390	15.4	29	1.1



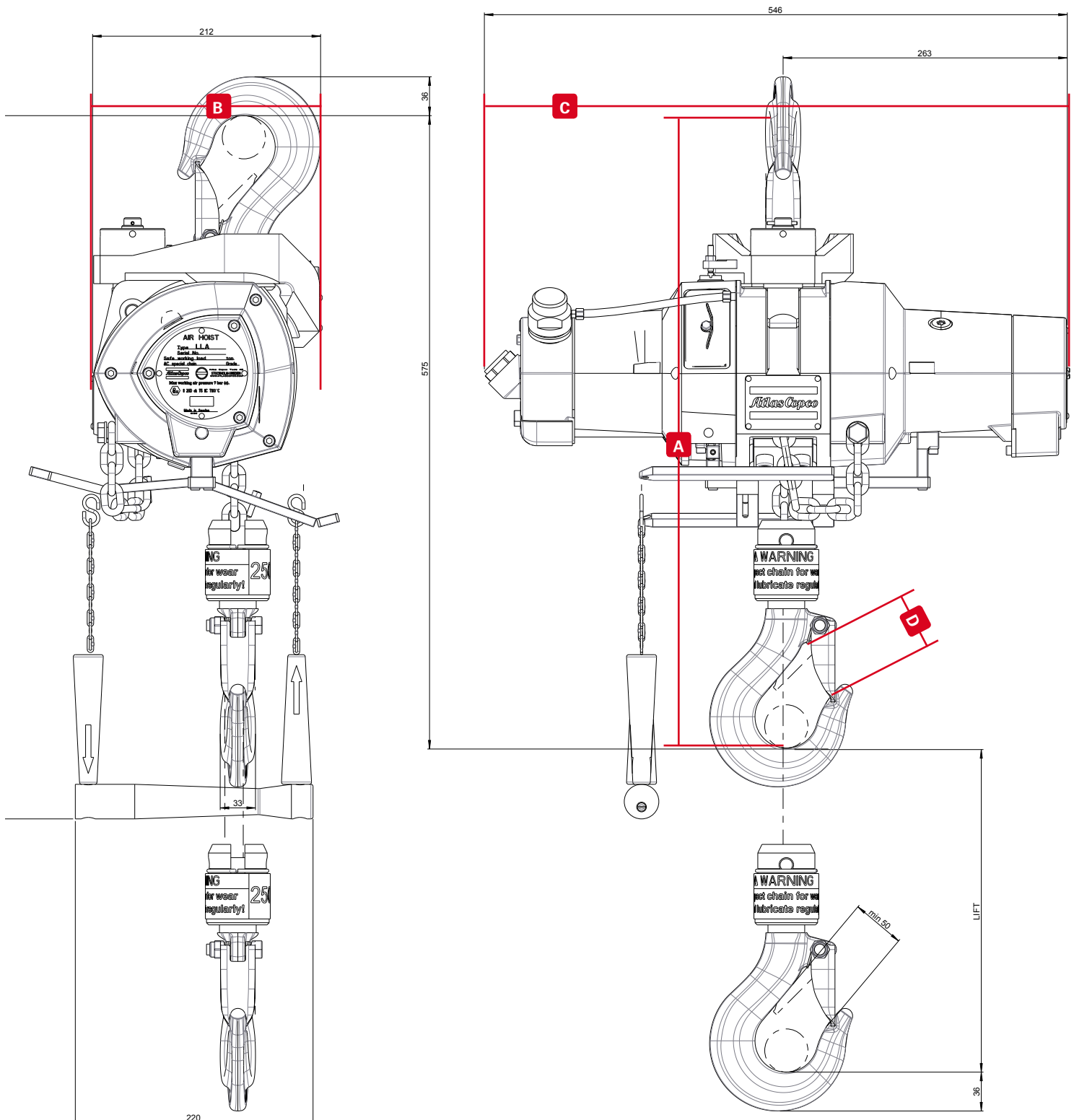
Technical data LLA2500

Model	Lifting capacity kg	Lifting speed at full load		Chain drops qty	Weight ex. chain		Chain weight		Required chain-length metre	Sound pressure	Air consumption		Hose dia		Hose fitting thread BSP	Ordering No.
		m/min	ft/min		kg	lb	kg/m	lb/ft			l/s	cfm	mm	in		
Lubrication free																
LLA 2500L EX	2500	3.2	10.5	1	42.5	93.7	2.9	1.9	Lifting height + 0.6	79	40	85	12.5	1/2	1/2	8451 1550 41

Performance figures are at 6 bar working pressure. NOTE: Load chain and control chain must be ordered separately.

Dimensions LLA2500

LLA 2500 EX	A		B		C		D	
Capacity, Kg	mm	in	mm	in	mm	in	mm	in
2500	575	22.6	212	8.3	546	21.5	50	2.0



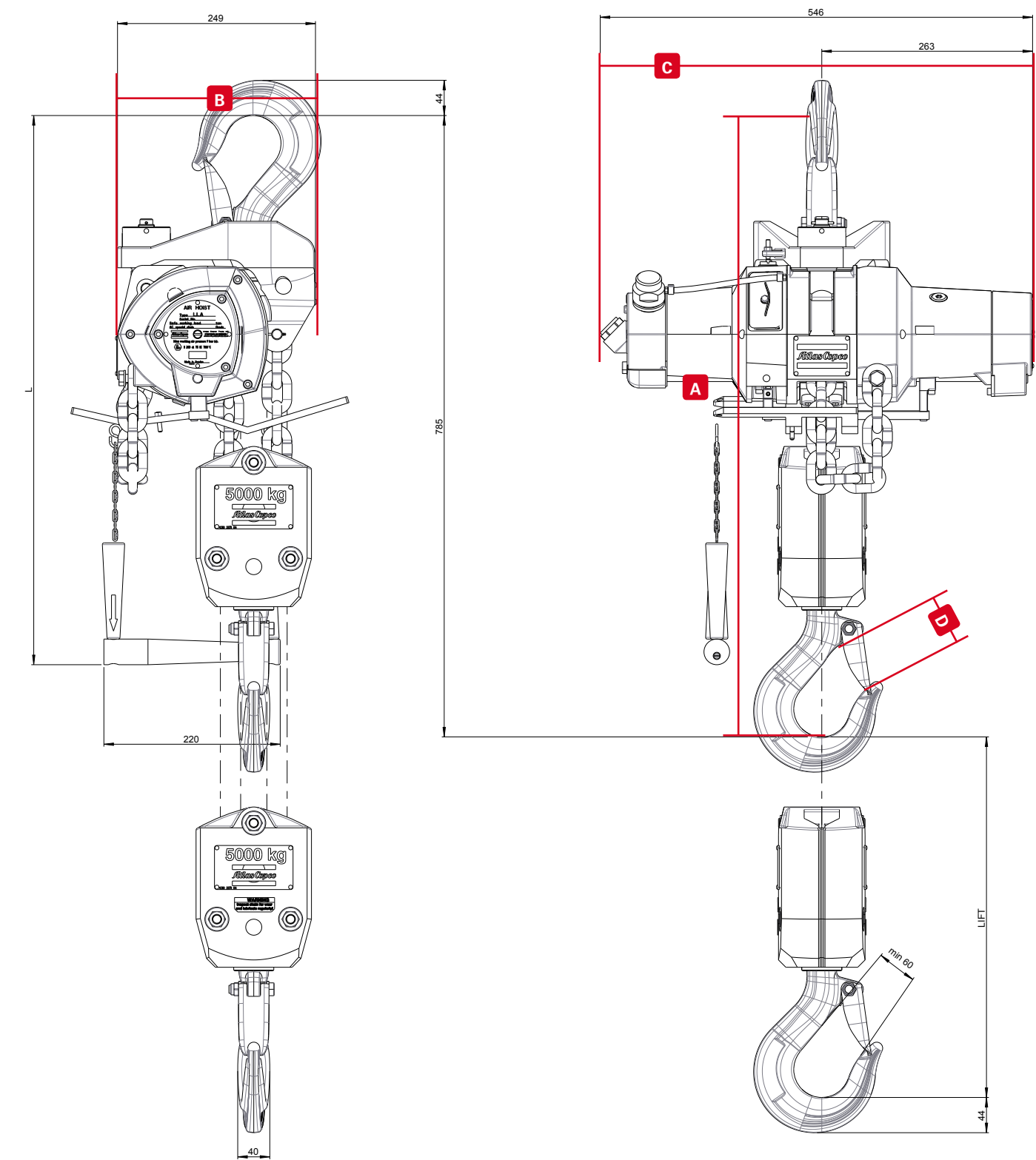
Technical data LLA5000

Model	Lifting capacity kg	Lifting speed at full load		Chain drops qty	Weight ex. chain		Chain weight		Required chain-length metre	Sound pressure	Air consumption		Hose dia	Hose fitting thread BSP	Ordering No.	
		m/ min	ft/ min		kg	lb	kg /m	lb /ft			l/s	cfm				mm
		Lubrication free														
LLA 5000L EX	5000	1.6	5.2	2	65.5	144.4	2.9	1.9	2 x Lifting height + 0.9	79	40	85	12.5	1/2	1/2	8451 1550 58

Performance figures are at 6 bar working pressure. NOTE: Load chain and control chain must be ordered separately.

Dimensions LLA5000

LLA 5000 EX	A		B		C		D	
Capacity, Kg	mm	in	mm	in	mm	in	mm	in
5000	785	30.9	249	9.8	546	21.5	60	2.4





Atex Certified trolleys for risk-free mobility – The obvious solution to horizontal mobility, Atlas Copco hoist trolleys are available in narrow or wide, manual or motorized versions. Atex Certified, flexible and simple to install, they are equally suitable for parallel or tapered I-beams, and easily adjusted to different widths.

"Precision" twistrod control – Twistrod control offers the highest level of precision. Adjustable length, up to five metres available.

Chain stop – Stop the hoist at a pre-determined position with a fitted chain stop.

Safety hook – Gain additional lifting safety with a fitted safety hook that cannot be opened even under load.



ATEX certified for safe operation –

– For lift applications in hazardous environments, our air hoists and trolleys work best.

– Ideal where sparks or high outer temperatures could ignite explosive gases, vapour or dust.

– Available in six sizes, they offer lift capacities from 250 kg to 5000 kg

– Manufactured in compliance with the European ATEX Directive.

– All hoists types are certified to level Ex II 2GT5 II C D100°C.



Smooth control and precise positioning

– Eliminate load sink and ensure smooth take-up- With Atlas Copco's patented disc brake mechanism you have stepless speed control and excellent inching characteristics that guarantee a smooth start.

"Remote" operation –

– Available in chain, pneumatic pendant or high-precision twist-rod control versions for operation at a comfortable distance from the load

– Pendant controls are available with two button (hoist) or four-button (hoist and trolley) handles.



“Remote” pendant control – Extend the operating area up to ten metres from the hoist with pendant controls. Comfortable rubber grip and has a two-button unit for hoist control, and four-button unit for hoist and trolley control. Both are equipped with an emergency-stop button.



Standard chain control – Standard versions of LLA hoists include a chain control handle.



Overload protection device – Avoid unintentional hoist overload with a fitted protection device. When overloaded, the device automatically reduces motor output. Supplied as standard (except for LLA 1000 U) for lifting capacities of 1000 kg, 2500 kg and 5000 kg. Optional accessory for loads up to 1000 kg.

Chain collectors – Chain collectors in reinforced PVC cloth or sheet steel can be ordered for a range of chain lengths.



Designed to outlast and outperform –

- Powered by air, Atlas Copco’s hoists stay cool in the toughest situations.
- To ensure long life, exceptional reliability and enhanced safety, they can be operated continuously at maximum load.
- No risk of damage or overheating with frequent stop-starts.
- Resistant to dust and moisture.

Small is beautiful -

- Easily installed almost anywhere as it is extremely compact and light compared to conventional electrically powered units.
- Perfect for cramped working conditions and/or low ceilings.
- Low weight also simplifies removal of the hoist for relocation.

Lubrication free – For applications where a clean environment is a necessity, use the complete Atlas Copco hoist and motorized trolley ranges.

- Available in lubrication free versions, the hoists can be run completely dry and leaves no lubrication in the exhaust air.
- Typical industries are food, chemical and pharmaceutical industries.

<https://www.atlascopco.com/en-uk/itba/products/Hoists-Trolleys>



Ordering your hoist or trolley with factory – fitted accessories.

To order your hoist or trolley with accessories factory-fitted, just list the required items and add the order code, 8990 0001 00. Note that air line accessories cannot be ordered assembled to the hoist.

Example:

To order a 500 kg hoist with motor driven trolley, four-button five-metre long pendant control and a load chain for a ten-metre lift, send the following:

Order to be sent	Comments
1 x 8451 1540 28	LLA 500 EX Hoist block
11 x 4310 2293 00	Load chain for hoist = Required height of lift + 0.5 m (see Technical data for LLA Hoist).
1 x 8451 1520 14	TLT 1000 M N Motor driven trolley
1 x 4310 2536 90	4 button handle + hoist actuator
5 x 4310 2576 96	Hose set for 4 button pendant control
1 x 8990 0001 00	Instruction to assemble above items



<https://www.atlascopco.com/en-uk/itba/products/Hoists-Trolleys>

Technical data, trolleys

Model	Max capacity kg	Max speed with full load		Air consumption		Beam width		Curve radius min.		Weight		Ordering No.
		m/min	ft/min	l/s	cfm	mm	in	mm	in	kg	lb	
		Motor driven										
TLT 1000 M N ¹	1000	14	45.9	4	8.5	50-160	2-6.3	1250	50	11	24	8451 1520 14
TLT 1000 M W ¹	1000	14	45.9	4	8.5	161-280	6.3-11	1250	50	12.3	27.1	8451 1520 71
TLT 3000 M N ²	3000	17.8	58.4	42	89	74-180	2.9-7.1	2200	86.6	48	105.8	8451 1520 30
TLT 3000 M W ²	3000	17.8	58.4	42	89	181-300	7.1-11.8	2200	86.6	51.5	113.5	8451 1520 97
TLT 5000 M ²	5000	16.2	53.1	42	89	181-300	7.1-11.8	2500	98.4	74	163.2	8451 1520 48

Performance figures are at 6 bar working pressure.

Motor-driven trolleys have 1/2" BSP connection.

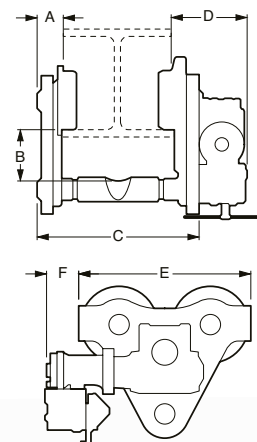
12.5 mm 1/2" hose size is recommended for 1000M, 20 mm for 3000 and 5000.

¹⁾ Pendant control must be ordered separately.

²⁾ Includes handle for control chain. Control chain must be ordered separately.

Dimensions, trolleys

Model	A		B		C		D		E		F	
	mm	in	mm	in	mm	in	mm	in	mm	in	mm	in
Motor driven												
TLT 1000 M N	24	1.0	52	2.1	212	8.3	225	8.9	264	10.4	-	-
TLT 1000 M W	24	1.0	52	2.1	Beam width + 57	Beam width + 2.3	225	8.9	264	10.4	-	-
TLT 3000 M N	37	1.5	78	3.1	262	10.3	148	5.9	380	15.0	94	3.7
TLT 3000 M W	37	1.5	78	3.1	Beam width + 89	Beam width + 3.5	148	5.9	380	15.0	94	3.7
TLT 5000 M	41	1.6	93	3.7	Beam width + 97	Beam width + 3.8	166	6.6	437	17.2	59	2.4



Trolley accessories

Designation	Ordering No. TLT1000 M	Ordering No. TLT3000 M	Ordering No. TLT5000 M
Zinc plated control chain per m		4310 0748 00	4310 0748 00
2-button pendant control			
Handle and actuator only	4310 2573 00	4310 2573 00	4310 0814 60
Hose kit per m	4310 2576 92	4310 2576 91	4310 2576 91



Hoist accessories

Hoist accessories Description	Ordering No. LLA 250/500/ 980/1000EX	Ordering No. LLA 2500/ 5000 EX
Load chain, zinc plated, per m	4310 2293 00	4310 2296 00
Control chain, zinc plated, per m	4310 0748 00	4310 0748 00
Stainless steel chain, per m*	4310 2482 00	
2 Button pendant control		
Handle and actuators	4310 2534 90	4310 2576 91
Hose set per m	4310 2576 91	4310 2576 91
LLA 250-1000 Wash Down Version		
Handle and actuators		4310 2534 91
Hose set per m		4310 2576 91
4 Button pendant control		
Handle and actuators	4310 2536 90	4310 2537 90
Hose set per m	4310 2576 96	4310 2576 95
Twist rod control		
Complete (1.1 – 2.0 m)	4310 0774 91	4310 0774 91
Extension set (+1.1 – 1.9 m)	4310 0780 91	4310 0780 91
Articulating link	4310 0876 91	4310 0876 91
Chain collectors PVC for length of chain		
4294967292m	4310 0742 04	
4294967289m	4310 0742 07	4310 2291 07
4294967284m	4310 0742 12	
4294967278m	4310 0742 18	
4294967271m	4310 0742 25	

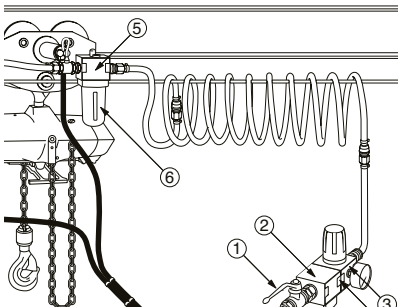
* Stainless steel chain only available for LLA 250 / 500

Hoist accessories Description	Ordering No. LLA 250/500/ 980/1000EX	Ordering No. LLA 2500/ 5000 EX
Chain collectors Steel for length of chain		
4294967284m		4310 2102 80
4294967278m		4310 2109 80
Overload protection device		
LLA 250 EX	4310 0812 83	
LLA 500 EX	4310 0812 84	
LLA 1000 U EX	4310 0812 85	
LLA 1000 EX / 2500 EX / 5000 EX	Included as standard	Included as standard
Safety hooks, zinc plated	4310 0739 01	
Chain stop, zinc plated	4310 0740 91	4310 2097 91

Note: For items specified per metre, the required length should be indicated by multiplying the Ordering number by the required length i.e. to order 12 m of load chain for an LLA 250 the order should be 12 x 4310 2293 00. When ordering load chain, follow the recommendations on chain length given in the Technical Data for LLA Hoists.

Air line accessories for hoists and trolleys

To ensure top performance and long service life from Atlas Copco air hoists and motor driven trolleys, the correct air line accessories should always be used in the installation. All hoists and motor driven trolleys have 1/2" BSP inlet connectors and a standard range of accessories is suitable for all installations.



Note: All motor driven trolleys are supplied with items to connect the hoist and trolley to a single air inlet.

Item	Description	Length mm	Connection thread	Designation	Ordering No.
1.	Ball valve		1/2" BSP Female	BAL-1A 15	8202 0311 29
2.	Air filter		1/2" BSP Female	MIDI Optimizer FIL M/S	9093 0021 02
3.	Air pressure regulator		1/2" BSP Female	MIDI REG 15C-S	9093 0021 05
4.	Assembly kit			Assembly kit	9090 0022 02
5.	Oil fog lubricator		1/2" BSP Female	MIDI Optimizer DIM	9093 0021 10
	Adaptor for lubricator (for use with hoist only)		1/2" BSP Male	Adaptor	4310 0786 00
	Adaptor for exhaust hose				
	- LLA 200/250/500/1000		1/2" BSP Female	Adaptor	4310 0788 00
	- LLA 1250/2500/5000		(1" Hose nipple)	Adaptor	4310 2125 00
	1/2" Diameter hose	max 10		PVC 13	9093 0038 71*
	1/2" Hose nipple		1/2" BSP Male	Nipple	9000 0243 00
	1/2" Hose clamp			Hose clamp	0347 0122 12
	3/4" Diameter hose	max 40		PVC 20	9093 0039 31*
	3/4" Hose nipple		1/2" BSP Male	Nipple	4150 0429 00
	3/4" Hose clamp			Hose clamp	0347 0122 15

* 30 meter coil



Committed to sustainable productivity

We stand by our responsibilities towards our customers,
towards the environment and the people around us.
We make performance stand a test of time.
This is what we call – Sustainable Productivity.

www.atlascopco.com

Atlas Copco